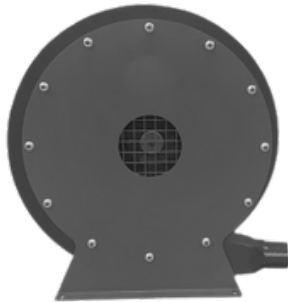


VHPF

High Pressure Centrifugal Fan



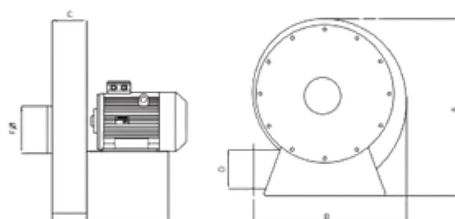
MOTOR INSULATION CLASS	F CLASS
MOTOR PROTECTION CLASS	IP 55
MOTOR EFFICIENCY CLASS	IE2, IE3
MOTOR ENCLOSURE TYPE	TEFC
MOTOR BRAND	GAMAK, WAT
BODY MATERIAL	DKP STEEL SHEET
BODY COATING	ELECTROSTATIC POWDER COATING
IMPELLER MATERIAL	DKP STEEL SHEET
DUTY CYCLE	IEC Duty Cycle-S1
WORKING TEMPERATURE	-20 - +50 °C
STANDARDS	IEC-60335-2-80, ISO 1940-1

High-pressure radial fans, also known as high-pressure centrifugal fans or radial blowers, are mechanical devices designed to generate high-pressure air or gas flow through a radial (outward) movement of air. These fans are specifically engineered to deliver air or gas at elevated pressures, making them suitable for a variety of industrial applications.

High-pressure radial fans play a critical role in many industrial processes and manufacturing operations where the movement of air or gas at elevated pressures is required. Their ability to deliver high static pressure airflow makes them indispensable in various applications, and they are designed to meet the specific requirements of each industrial setting.

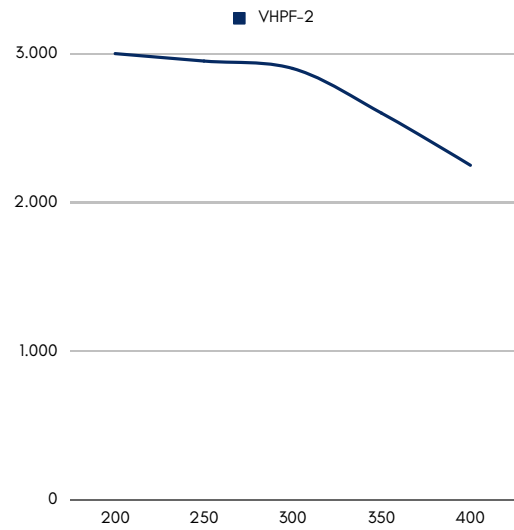
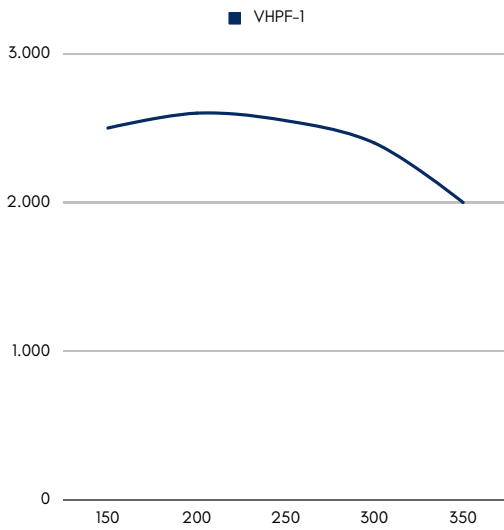
Model	Voltage (V)	Frequency (Hz)	Power (KW)	Speed (r.p.m)	Airflow (m³/h)	Current (A)	Pressure (Max.pa)	Weight (kg)
VHPF-1	230 / 380	50	0,37	2800	350	2.5/1.05	2500	21
VHPF-2	230 / 380	50	0,75	2800	400	5/1.78	3000	28
VHPF-3	230 / 380	50	1,10	2800	450	7.1/2.4	4000	41
VHPF-4	230 / 380	50	1,50	2800	500	10/3.3	4500	47
VHPF-5	230 / 380	50	2,20	2800	600	13/4.4	5000	57
VHPF-6	230 / 380	50	3,00	2800	1000	17.8/5.7	7000	62
VHPF-7	380	50	4,00	2800	1200	8	8000	69
VHPF-8	380	50	5,50	2800	1300	10.5	9000	108
VHPF-9	380	50	7,50	2800	1500	13.5	10000	135
VHPF-10	380	50	11,00	2800	1700	16	11000	160

DRAWING



Model	A	B	C	D	QF
VHPF-1	470	510	70	70	130
VHPF-2	590	630	70	70	130
VHPF-3	600	620	70	70	130
VHPF-4	630	710	70	70	130
VHPF-5	680	65720	80	80	130
VHPF-6	720	710	80	80	150
VHPF-7	750	820	80	80	150
VHPF-8	810	780	100	100	150
VHPF-9	870	870	100	100	150
VHPF-10	1000	1000	110	110	160

PERFORMANCE CURVES



RADIAL FANS / Single Inlet Blower Fans

